

# ampac intelligence

**SmartGraphics**

**FireFinder™ Graphics System**

Ampac's SmartGraphics System unleashes the full power of FireFinder™ by creating a robust and versatile hub for controlling your fire management system. This graphics-based system delivers functionality and clarity in an integrated unit. Flexible and intuitive in its design, SmartGraphics puts command of the system that you want at your fingertips. Access the smart solution in fire systems with Ampac.



**World Leader of Innovative Solutions in Fire Detection and Alarm Systems**

## The smart solution in fire systems.

**The heart of the system** At the heart of any building management system lies the need for a hub—a control point for the fire system that protects the building.

The Ampac SmartGraphics System has been designed as that control point—a flexible, secure hub capable of displaying crucial information with speed in a low-cost graphically-based format.

The result? Faster emergency response. The ability to maintain and access the building's fire alarm system (or that of your client) remotely and to modify, maintain and update the site specific information as required.

The Ampac SmartGraphics System offers an optional touch screen user interface and is the perfect partner for the Ampac FireFinder™.

**Password Protected** A three-tier password access to SmartGraphics determines what features an operator can use. Level One (does not require password) allows operator to browse through maps, acknowledge alarms and print maps. Level Two gives operator Level One privileges plus access to system information, event logs, and zone/sensor test/isolated facilities. Level Three gives operator Level One and Two privileges plus access to tools (password administration) and the ability to shutdown SmartGraphics.

**Faster Emergency Response** Any change in the status of a device is immediately displayed graphically on the monitor. In the event of an alarm, the SmartGraphics may be configured to automatically print a map showing the location of the incipient fire.

**Ability to conduct alarm and fault testing including isolating zones or devices** SmartGraphics allows an operator to conduct testing of the fire system. System integrity and

functionality of every zone and sensors can be tested. Zones and sensors can also be isolated.

**Maps can be modified on site** Trained graphics operators will be able to make modification to maps easily. Trained operators with the licence to modify maps will have the tools and software to execute these changes.

**Separate logs for alarm, fault and isolate conditions** SmartGraphics provides the operator with historical data on the activity of the fire alarm system. To facilitate the interrogation of data, alarm, fault and isolate events are stored in separate logs. These logs can be printed on demand.

**Site-specific information can be user defined for each map** Notes can be added to each map giving the operator or fire brigade in attendance specific information about the area (eg list of hazardous chemicals).

**Simple installation** SmartGraphics is installed off a CDROM. Within minutes your SmartGraphics will be up and running. Operator must be licenced to use this software. A security key fitted to the computer is supplied with each licence purchased.

**Based on an industry standard platform** ModBus protocol between SmartGraphics and FireFinder™ fire alarm systems. This mode and format of transmission has been adopted because of its worldwide popularity in graphics based systems.

**Templates and symbols can be user defined** Trained graphics operators will have the ability to create a library of templates. These can be used as a foundation to create new maps for different sites. Symbols may be customised in shape, colour and size to fit demands of a variety of buildings.

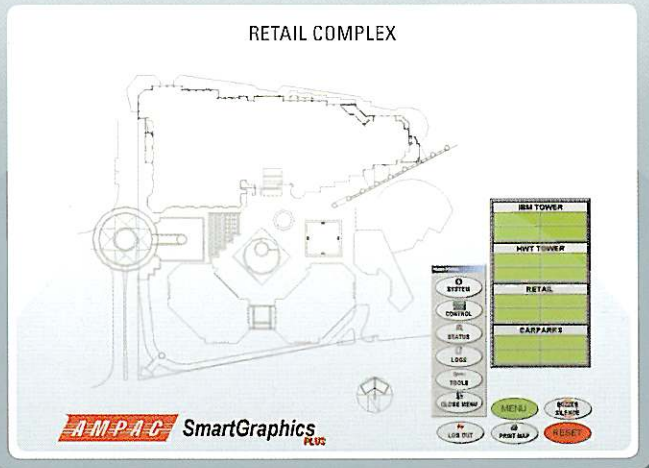
### FEATURES

- > **Faster emergency response**
- > **Ability to conduct alarm and fault test including isolating zones or devices**
- > **Separate logs for alarm, fault and isolate conditions**
- > **Password protected**
- > **Site-specific information can be user-defined for each map**
- > **Supports multiple SmartGraphic systems and users**
- > **Simple installation**
- > **Based on "ModBus" protocol which is an industry-standard platform**
- > **Maps can be modified on site**
- > **Templates and symbols can be user-defined**
- > **Multiple communication protocol can be used-RS232, RS485, TCP/IP**

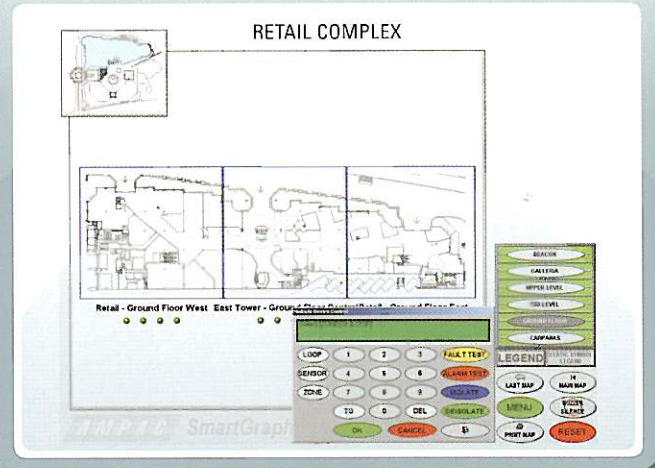
flexibility, security, control,  
access and integration



- 1** Overview of site and status of fire system. Control and functions available are dependent on user access level.



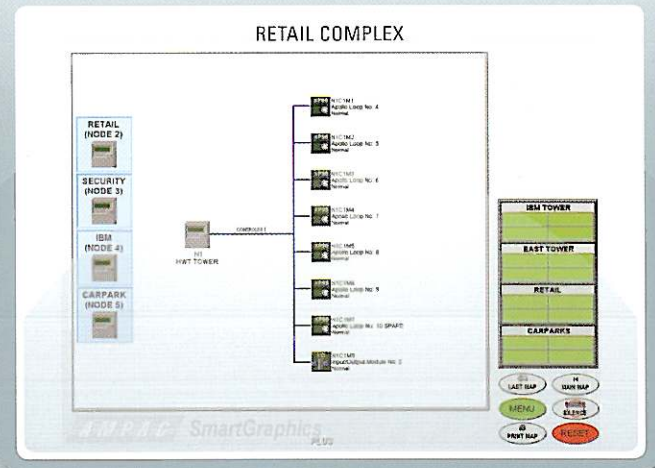
- 2** Easy to use graphical interface, facilitating the testing of the system remotely from the main Fire Control Panel



- 3** Ability to zoom to a particular area of the site quickly. A key map always helps your navigation of the site.

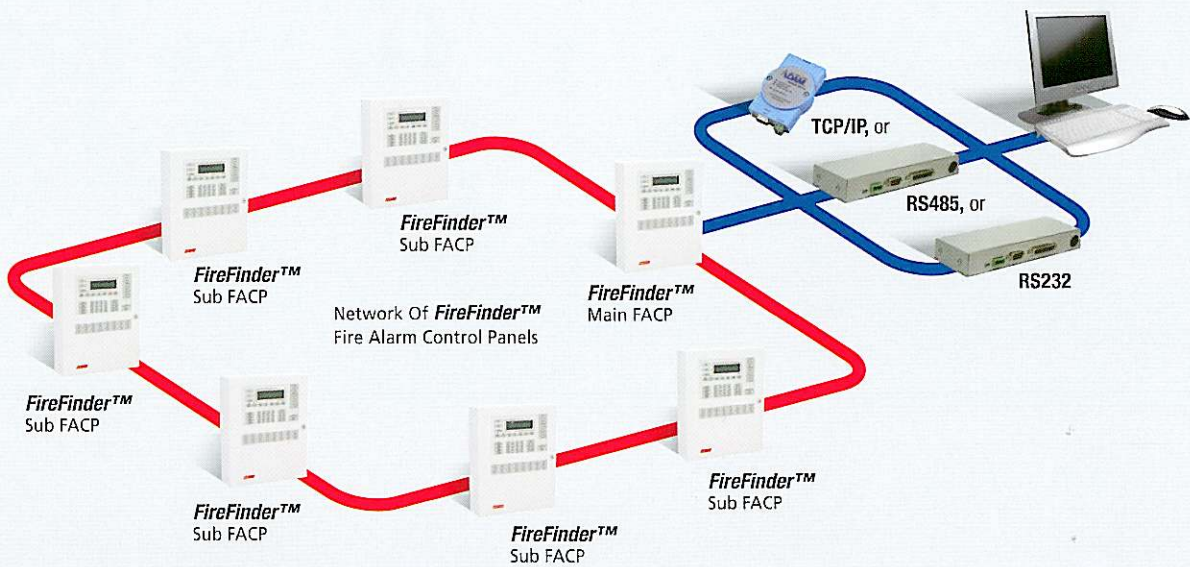


- 4** The status of the entire fire system no matter how complex can be quickly monitored. Each node is displayed giving location, type and operational status



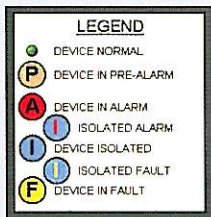
**SmartGraphics**

# Ampac SmartGraphics System

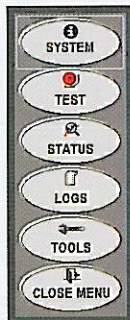


## Screen Legends

### Screen Legends Device / Detector Status



### Main Menu



### Administrator's Menu



## Technical Specifications

**CPU** > Pentium 400mHz, 64M RAM, 1Gb Hard Drive, CD ROM (Recom. min.)  
 Serial comms port for interface to FireFinder™  
 Serial comms port for mouse or touch screen interface  
 Parallel comms port for hardware security 'dongle'  
 Parallel comms port for printer

**Monitor** 17" min (1074x768)

### RS232 Communications

**Cable** 1 Pair twisted & screened  
**Distance** 15m maximum (from FireFinder™)  
**Baud rate** 9600 - 38400

### RS485 Communications

**Cable** 1 Pair twisted & screened  
**Distance** 1200m maximum (from FireFinder™)  
 (PC must be fitted with RS485 interface)  
**Baud rate** 9600 - 38400

### TCP/IP Communications

For more information, speak to one of our customer sales support personnel at your nearest Customer Service Office.

## Multi-Level Access

- Level 1** > View only
- Level 2** > Level 1  
> Control/Test Facility  
> View event logs
- Level 3** > Level 2  
> Add/delete/edit users  
> Erase event logs  
> View and erase user access logs  
> Shutdown systems



[www.ampac.net](http://www.ampac.net)

Due to Ampac's commitment to continuous improvement specifications provided may change without notice

### AUSTRALIA

Ampac Technologies Pty Ltd. 97 Walters Drive, Osborne Park 6017, Western Australia  
 Tel: +61 8 9242 3333 Fax: +61 8 9242 3334 email: info@ampac.net

### EUROPE

Ampac Europe Ltd. Unit 18 West Moor Park, Networkcentre, Doncaster, England DN3 3GW  
 Tel: +44 (0) 1302 833 522 Fax: +44 (0) 1302 835 021 email: info.eu@ampac.net

### NEW ZEALAND

Ampac Industries Ltd. Unit 4/101 Diana Drive, Glenfield, Auckland, New Zealand  
 Tel: +64 9 443 8072 Fax: +64 9 443 8073 email: info.nz@ampac.net

