

## VISUAL WARNING STROBE LIGHT ASL-30 SERIES

A Fire and Evacuation System Compatible Device

PDS208-0030-2-1

### Description

Ampac now offers red, amber and blue strobes, in a choice of 1, 3 or 5 watt version. The Ampac ASL-30 strobe is supplied complete with a two-part "turn and lock" type base making it easy to mount onto a surface or round conduit junction/BESA box.

When installing the strobe, one part of the base is fitted to the strobe unit. The second part replaces the conduit junction/BESA box lid or is fixed to the surface where the strobe is to be located. A simple single twist action locks the strobe in place and hides the base fixing points.

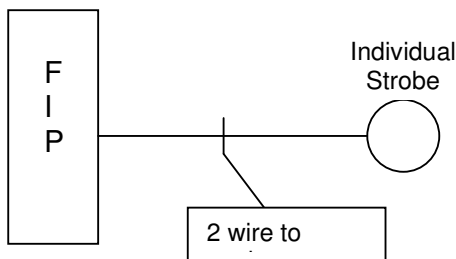
The ASL-30 also offers maximum flexibility during installation as **all versions are of the same physical size**. This enables the bases to be prefixed allowing the strobe with required wattage and colour, to be installed at a later date.

Ampac Fire Alarm Control Panels (FACP's) support the use of individual visual warning strobe lights.

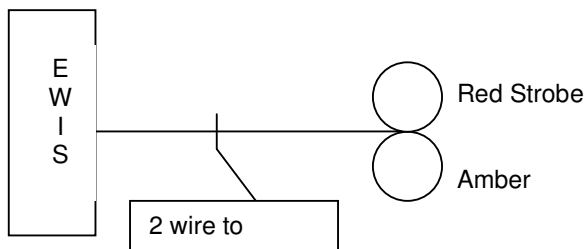
The Ampac ASL-30 strobes are also ideal for security systems.

#### APPLICATION

- Hospitals
- Nursing homes
- Industrial workshops
- Plant rooms
- Offices



Typical wiring diagram for individual strobe



Typical wiring diagram for red & amber

### Specification

<b>Operating voltage</b>	20 to 28 volts d.c.	
	<b>Current drain</b>	<b>Luminance</b>
1 watt –	55 mA	80,000 candle
3 watt –	135 mA	100,000 candle
5 watt –	155 mA	150,000 candle
<b>Flash rate</b>	Approx. 60 per minute	
<b>Op. Temperature</b>	-30° to +70° C	
<b>Material</b>	Lens – ABS/ Polycarbonate/Acrylic	
<b>Colour</b>	Base - Black Lens - Red - Amber - Blue	
<b>Dimensions – inc base (mm)</b>	77 Diameter x 65 Height	
<b>IP Rating</b>	IP 65	
<b>Weight (net)</b>	109 g	
<b>Markings</b>	CE N1236	
<b>Wattage</b>	<b>Product codes</b>	
<b>1 Watt</b>	Red Amber Blue	208-0030 208-0034 208-0038
<b>3 Watt</b>	Red Amber Blue	208-0032 208-0036 208-0040
<b>5 Watt</b>	Red Amber Blue	208-0033 208-0037 208-0041



Individual Visual Warning Strobe